



Exploring Ecosocial Work in Ireland

IASW Webinar 15th Nov
2023

Mary Hurley - UCC



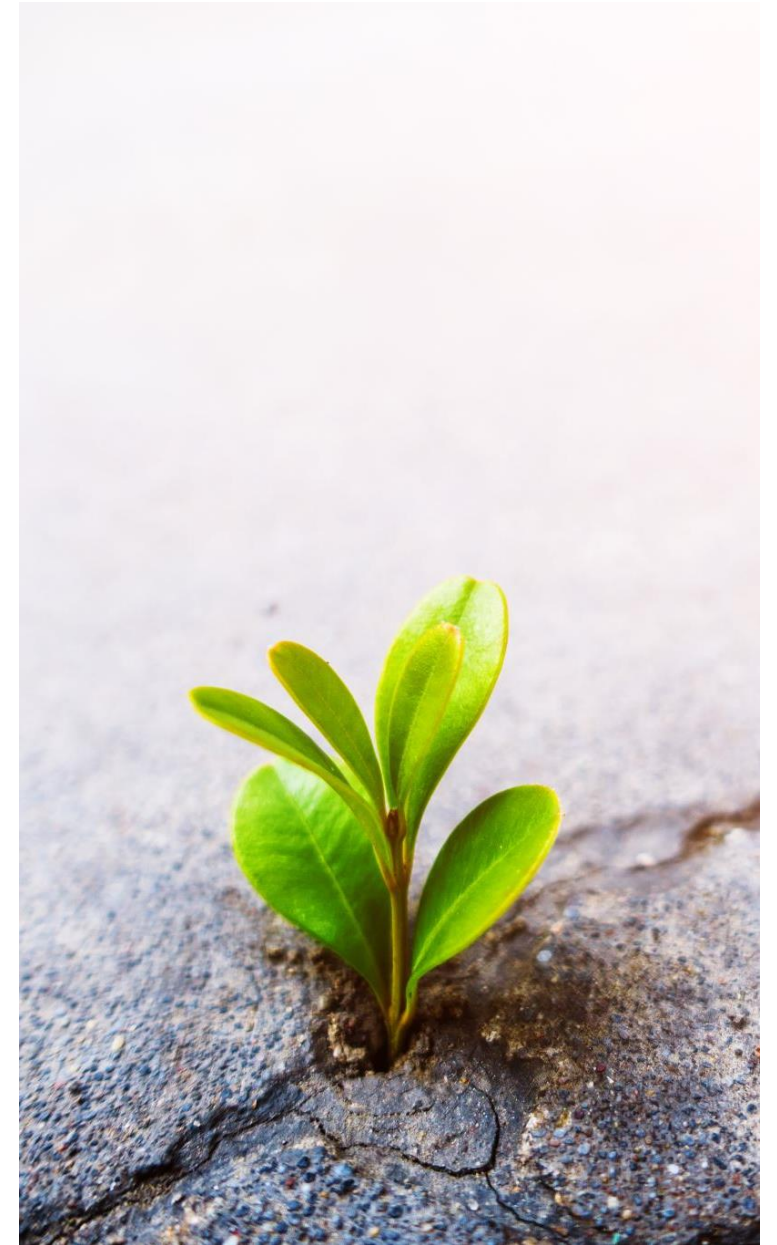
THE NATURAL WORLD NEEDS OUR PROTECTION NOW

- Social Worker
- Educator
- Environmental activist for the last 20 years <https://chasecorkharbour.com/>
- My interest in teaching about Social Work and the Environment emerged from environmental activism in Cork Harbour for over 20 years and increasing awareness of climate change and its impacts.
- **It is now scientifically accepted that climate change is real and is causing widespread disruption across the globe and it is caused by man-made human activity . Direct climate change affects can be seen in increased temperature rise, altered rain patterns and increased frequency and intensity of extreme weather events.**
- **However, these effects are experienced unevenly. Populations in the Global South are more impacted than those in the richer Global North –**

New Module
Sustainability, Environmental
and Social Justice Issues in
Professional Practice

Interdisciplinary module for
social workers , youth and
community workers and nurses.

- In 2021 we created a new module in response to a growing concern about the climate emergency and how we could respond to it.





Lesson 1

Ecological Approaches to Practice

Movement away from an anthropocentric worldview

Green Social Work, Ecological social work , Eco-Feminist Social Work perspectives

- **Lesson 1 - Ecological Approaches to Practice**

move away from an anthropocentric focus

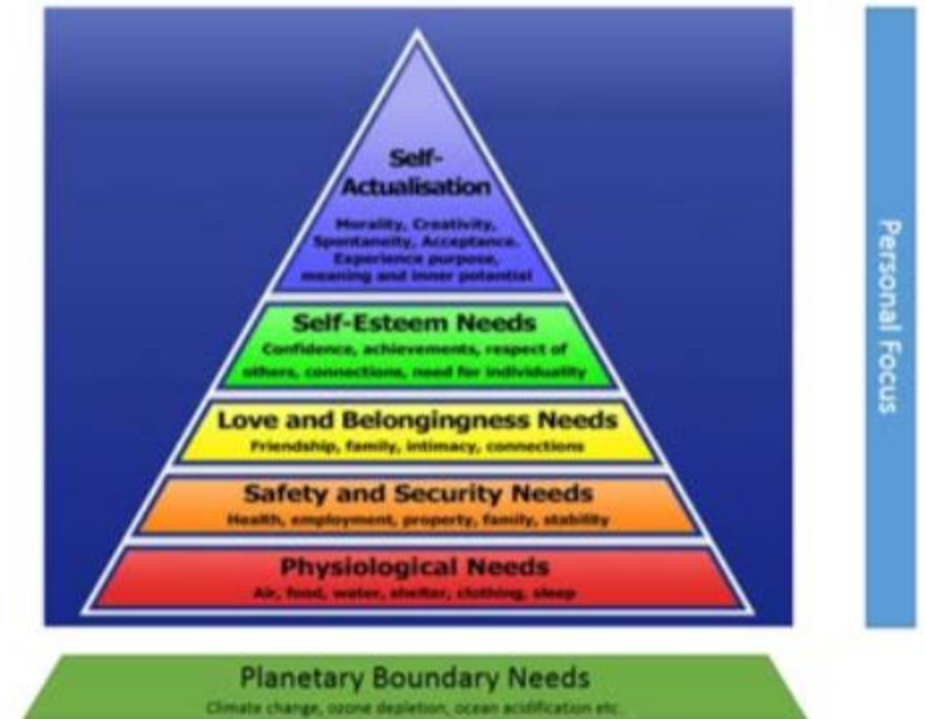
As educators, we need to educate students make links between the social and natural worlds

AND, We also need to connect with colleagues in practice to build knowledge and practice to effectively respond the climate crisis together

- Maslow's graph with Planetary boundary needs added

- (Arevalo, L. (2017). Agitating through an alternate economy: Social work, sustainability and the circular economy in M. Rinker and M. Powers (eds.) Social Work: Promoting community and environmental sustainability. <http://www.ifsw.org>

Figure 1: Maslow's Hierarchy with Environment Added⁷

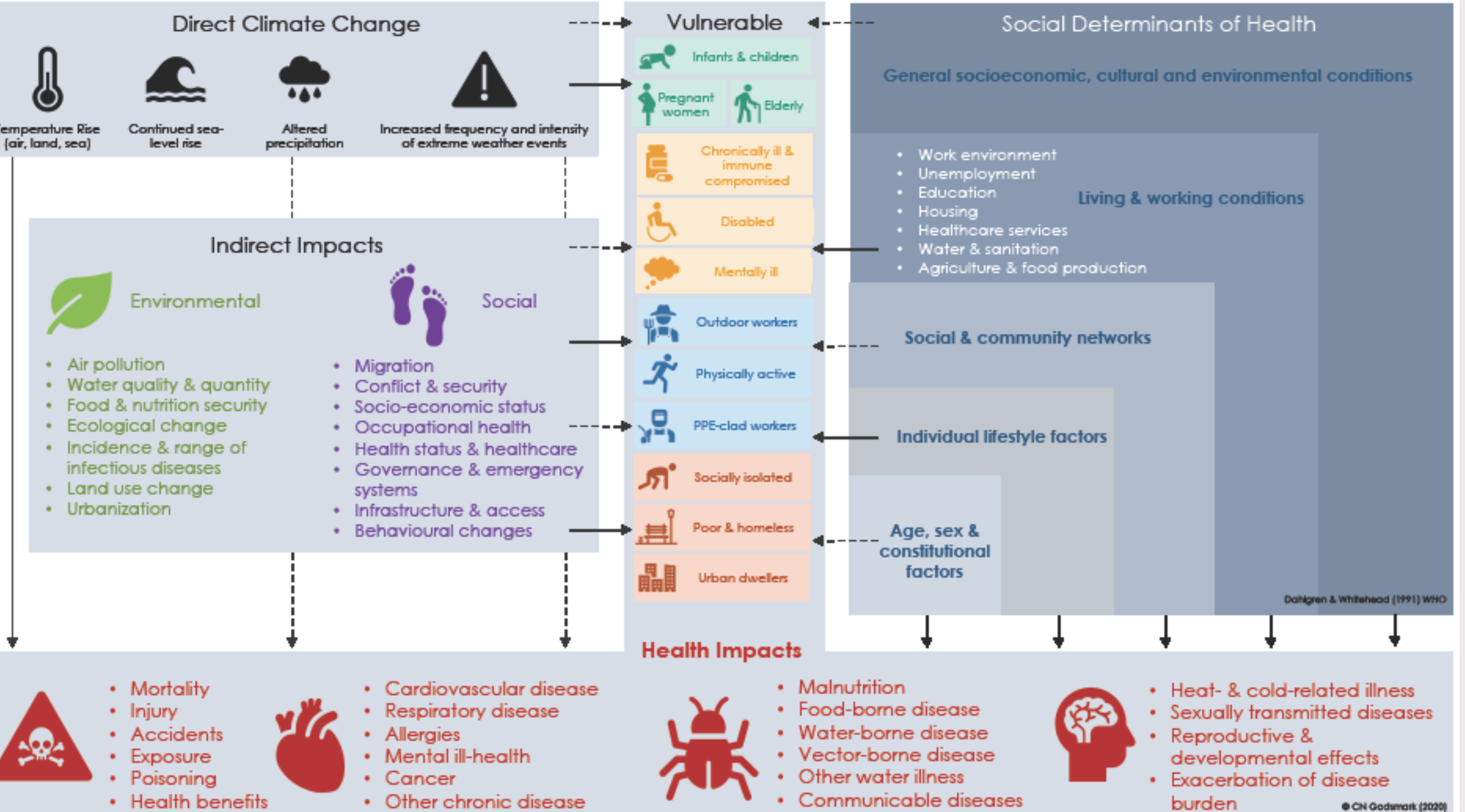


Maslow's hierarchy of needs with the added knowledge that unless we all support our overall planetary needs, our personal needs at each level will, in the future, no longer be able to be met

Lesson 2



The Climate
Emergency Facing Our
Living Planet: Facts &
Figures (WHO, IPCC)



Source: CN Goldmark, 2020)

WHO IS AFFECTED BY CLIMATE CHANGE ?

HUMANS

Approximately 3.3 to 3.6 billion people live in contexts that are **highly vulnerable** to climate change. A high proportion of species is vulnerable to climate change. **Human and ecosystem vulnerability are interdependent.**

(Intergovernmental Panel on Climate Change, *Working Group II Summary for Policymakers* (2022) 11

Animals

3 billion animals killed or displaced by bushfires crisis including More than 61,000 koala bears (The Guardian 2020)

The Planet

Biodiversity loss, species extinction





Lesson 3

Climate Justice for Social Professions

- Climate justice theory
- Ecological justice theory
- Irish & EU legislation

Lesson 4

- My World, My Ecology -
Sensory Learning (portfolio)



Lesson 5

Eco Social Practices in Action

Mud Island Community Gardens North
Strand Dublin3

Doon Moon Flowers (Social Farming)
Co. Limerick

<https://www.youtube.com/watch?v=uorV5KHdXgw>

New Wave Wild Project Tralee, Co
Kerry

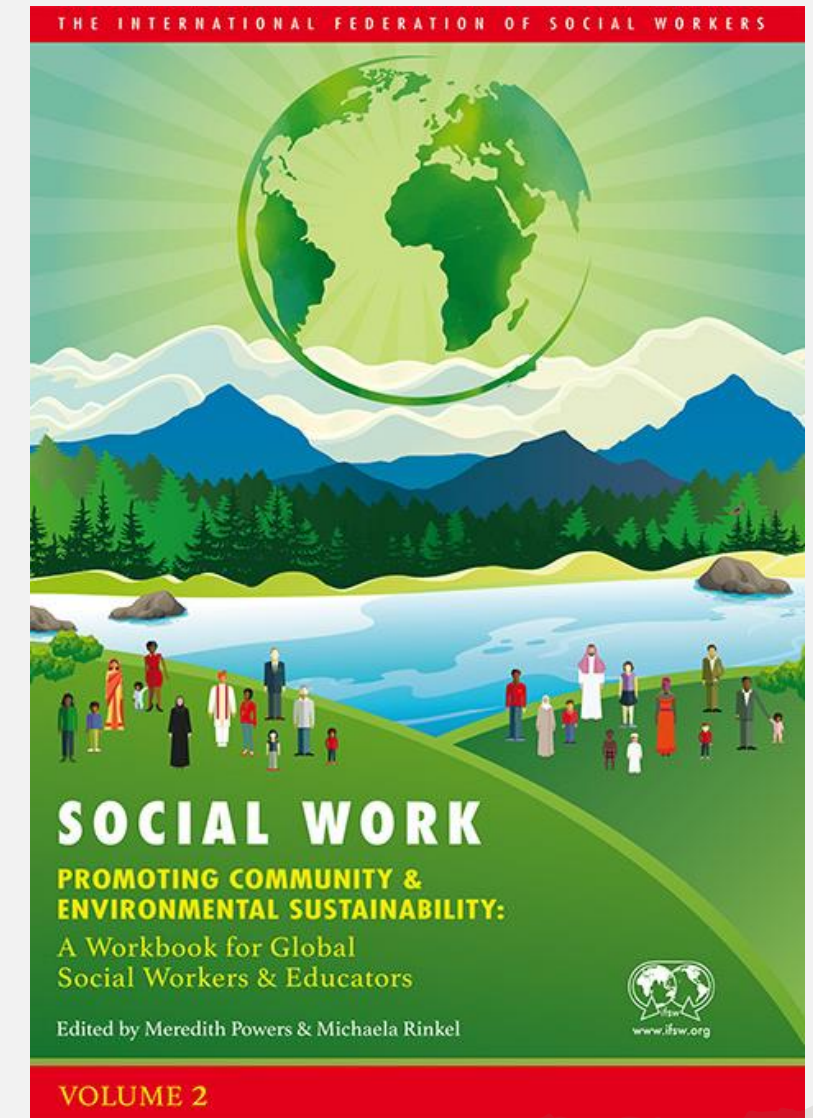
<https://www.newwavewildproject.ie/>



Lesson 6

Global Responses & International Social Work Responses

- Connecting with social work colleagues and academics in Europe through IFSW
- Guest lectures by Social Work academics writing in the area



Thanks for Listening !



Seeking out case studies in Ireland where Social Workers are activists and engaging in sustainable development initiatives with service-users and communities.

MODULE CONTENT



THANKS FOR
LISTENING

Questions? Comments...

