



IASW Newsletter

June 2023



A Note from our Chair, Vivian Geiran

Dear colleagues and friends, I hope you are well and looking forward to some holiday time and an opportunity to recharge over the summer. There is a lot of updating for you in this summer newsletter. On the staff team front, we warmly welcome our new Office Administrator – Katie Boyle – as we said farewell and a big ‘thank you’ to outgoing Administrator, Sarah McDonnell. The Association’s 2023 AGM on 31 May was another milestone in our calendar, particularly as we transitioned to some new structures following our governance review. I want to thank all those Board members who have stayed on for another term. We have also continued to progress other actions arising from the governance and structures review. While decisions have been made at both our EGM and AGM this year, remaining actions arising will continue to be progressed in the weeks and months ahead.



Work continues with the all-employers forum in social work, to address the challenges in training, recruitment and retention of social workers in Ireland. IASW continues to play a strong role in this partnership approach to the problems faced, building on our report on the issues, which we published last December. As well as working on generating a draft strategic plan to respond to the various issues, IASW is to the fore in a number of related developments. These include exploring how the coordination of practice placements could be enhanced, for the benefit of all stakeholders, as well as partnering on proposed new research regarding social worker retention. In addition,

IASW colleagues Anna Deneher, John Brennan and I attended the most recent IFSW-Europe Delegates Meeting in Prague last month. At that meeting, I tabled a proposal that the issues of attracting entrants to social work programmes, as well as wider recruitment and retention issues in the profession across Europe, be specifically incorporated into the IFSW work plan for the coming year. This proposal was passed unanimously. I had discussions there too with representatives from a number of countries' delegations, all expressing challenges similar to what we face in Ireland. We have agreed to further share information and learning on these issues, as well as adopt as far as possible a unified approach to addressing them.

Back on the 'home front,' we continue to work on another key governance review recommendation, the development of IASW resourcing and capacity to deliver on our strategic goals. A critical enabler for that action is the need to generate more funding, to enable IASW to build our human resources. That is why it is so important to continue to grow our membership numbers, as we have been doing. Our membership is our strength in so many ways. In addition, we have applied for funding from some of the key social work employers, specifically to enable us to better resource and be more effective in our work as an Association. I am happy to report that the Probation Service have recently responded very positively to our application to them, with a commitment of very valuable funding for IASW in the current year. We await responses to our other applications.

Stay well and I look forward to continuing to work with you all into the future.

Vivian Geiran

IASW Chair, SW00319

2023 - 2024 Board of Directors

Our Newly appointed Board of Directors:

Vivian Geiran - Chair

Colletta Daliken


Majella Hickey

Rachel McCormack

Brídín Murphy

Sinéad McGarry

Fiachra Ó'Súilleabháin



Social Workers:
Stronger
Together for
Social Change

As per the associations Constitution,
Independent Director(s), Vice-Chair and Treasurer shall be appointed by the Board.
The first meeting of the new Board will take place on July 10th.

We would like to thank our Directors for their hard work, tireless efforts, and dedication to the IASW over the last 12 months and look forward to your continued engagement with the IASW. We couldn't do all that we do, without the tremendous support we

receive from our of voluntary Board of Directors.

[More Info](#)

Annual General Meeting



Thank you so much to all of our members who participated in the 2023 virtual Annual General Meeting. While we struggled to reach a quorum, we eventually reached the required number, and had over 40 members in attendance. A copy of the minutes (to be approved at 2024 AGM) and motions, can be found by clicking the button below. A big thank you to all those members who stayed for the duration of the meeting to ensure we retained our quorum.

[More Info](#)

2022 Annual Report & Financial Statements



In April we released our Annual Report and Financial Statements for the year ending 2022. Year on year we are consistently improving the standard of the Annual Report, offering readers a real insight into the business of the IASW, using it as an opportunity for the IASW to tell its story, vividly, honestly and in its own unique way. You can download a copy online now.

[Visit our Website](#)

Gift a Student with IASW Student Membership

Calling all Practice Teachers! Consider gifting your students with an IASW student membership to our community, empowering them with networking opportunities, invaluable resources, and a supportive network. Together, let's inspire and equip our future professionals. Thank you for your generosity.



Refer a Colleague - Be in with a chance to Win a €100 Press Up Voucher

381 new members joined the IASW in 2022, we are asking our members to HELP US increase that figure to 500 in 2023. All you have to do is reach out to colleagues who would benefit from IASW membership, and encourage them to join IASW today. For every member you recruit, the IASW will enter you into our monthly prize draw to win a €100 'Press Up' Gift Voucher.



Member Testimonial:

"As a new starter into the profession of just one year, the IASW has been pivotal for me in terms of networking, keeping motivated in the profession with ongoing CPD training and being kept informed on such trainings. The role I am currently in was brought to my attention through the IASW. As a whole, being a member of the IASW has been paramount in shaping my outlook and networking with other members."

- Amy O'Hara

[Refer a Member](#)

The Citizens Assembly on Drug Use Submission

Written by IASW members, Kerry Cuskelly, Dr. Hilda Loughran Dr. Brian Melaugh, this submission provides a brief outline of the social work contribution to the work of the

citizens assembly on drugs. Social workers, through their national association, take the view that drugs should be viewed within a social and environmental context and as such, social work can offer key contributions and leadership on this issue.

[Read the Submission Here](#)

Tax Relief



CORU registered professionals may claim tax relief (at 20%) against the

CORU annual retention fee where there is a statutory requirement for registration with CORU. This does not apply when a register is still open for grandparenting and whilst the relevant title is not protected.

[More Info](#)

Call for Multi-Lingual Members

Do you or a Social worker you know speak a language other than English, including Irish?



Let us know! We are seeking passionate individuals fluent in another multiple languages to make a meaningful impact through translation and representation. Share your linguistic talents and create a more inclusive world. Reach out to us today.

[Contact Us](#)

HSCP Hub

The Health and Social Care professions Hub is a central repository and communication channel to enable sharing of information and resources to support health and social care professionals in practice. It is developed and managed by the HSE National Health and Social Care Professions Office. The HSCP Hub provides info and resources for: Professional Development, Leadership & Innovation, Education & research, Clinical Leadership Representation, Digital Health, and many others.



Access the HSCP Hub:

1. Go to hseand.ie
2. Log in/create an account
3. Go to Hubs & Resources
4. Select HSCP Hub

[Access HSCP Hub Here](#)

Vincentian MESL

HSE National Clinical

Research Centre at SVP

Since July last year the Vincentian MESL Research Centre at SVP has continued the MESL research previously carried out by the VPSJ (Vincentian Partnership for Social Justice). In this newsletter we would like to introduce you to the MESL research, update you on our recent activity, and inform you about an upcoming event to launch our latest research on minimum living costs.

[Learn More Here](#)

Guidelines for Post Mortem Examination Services

The HSE wish to extend their sincere thanks to those who shared their expertise during this consultation process to review the HSE National Clinical Guidelines for Post Mortem Examination Services. The publication of these clinical guidelines and associated documentation builds upon years of work to add to current knowledge and expertise.

[Find Documents Here](#)

World Health Assembly

The resolution responds to the large global need for rehabilitation and the significant gap in availability of services, especially in low- and middle-income countries, with as much as 50% of people not receiving the rehabilitation they require. The resolution calls for key actions to be taken by Member States, international organizations and other relevant stakeholders to strengthen rehabilitation in health systems.



[Learn More Here](#)

CPD & National Practice Teaching in Social Work Initiative

Cliona Murphy, our Professional Development Coordinator, talks about the importance of CPD on the National Practice Teaching in Social Work Initiative website which also has many other resources useful for practice teaching.

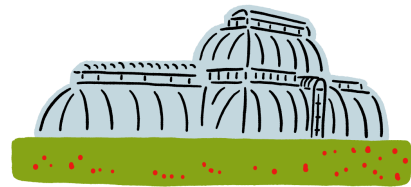


"CPD supports the building of professional confidence and building our professional identity."

Cliona Murphy, Professional Development Coordinator

IASW Summer Social

Plants and Power – Botanical Imperialism: A Summer Social. Join members on a summer social, taking a guided walk in the beautiful surroundings of Dublin's National Botanic Gardens. Devised by guide Charlotte Salter-Townshend, the walk will explore the geographical origins of plants and the role certain plants played in empire building, the development of slavery and international trading routes.



[Learn More & Register Here](#)



Irish Association of Social Workers | 114-116 Pearse Street, St Andrews Resource Center,
DUBLIN 2,
Dublin, D02 PR44 Ireland

[Unsubscribe administrator@iasw.ie](#)

[Update Profile](#) | [Constant Contact Data Notice](#)

Sent by administrator@iasw.ie powered by



Try email marketing for free today!